

ADAPTIVE DUNGAREES

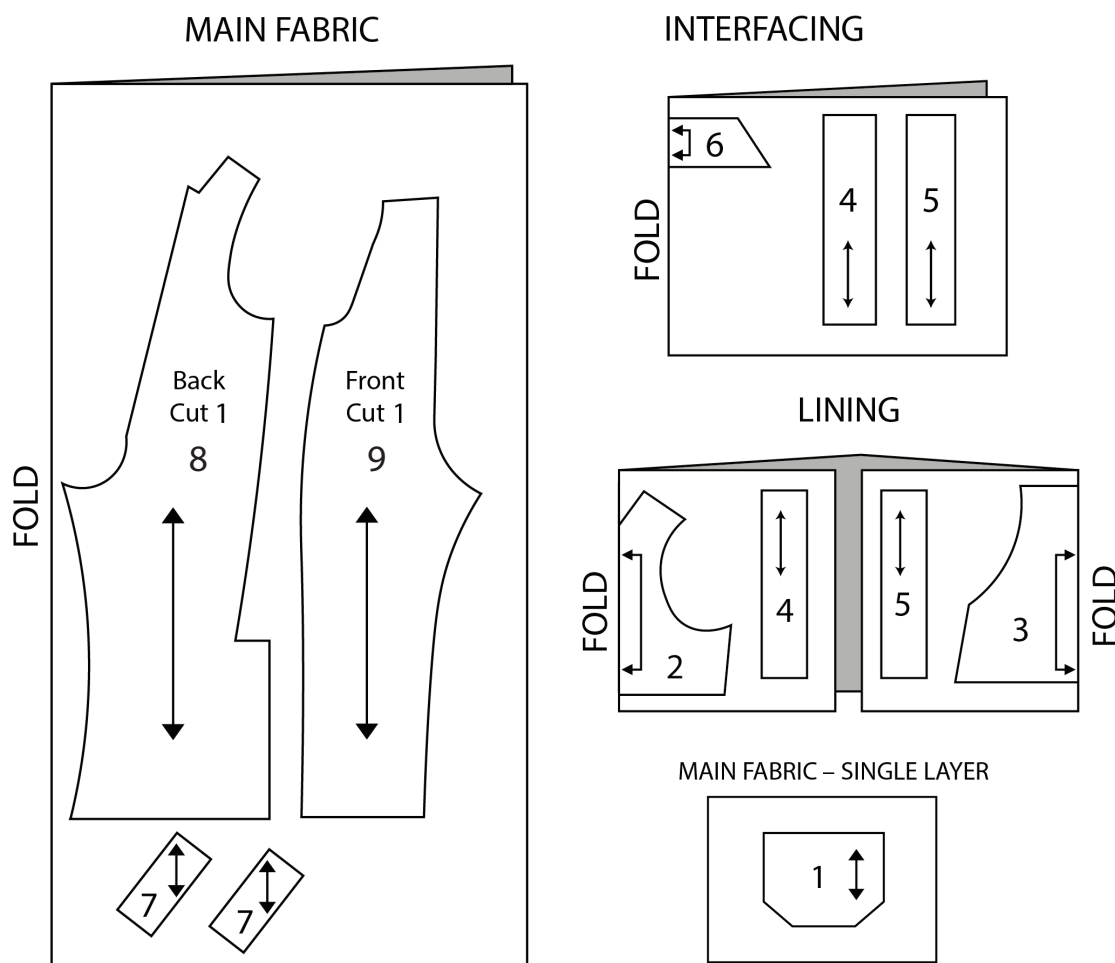


- 1m fabric
- 40cm cotton lining
- 2x 3cm dungaree clips
- 45cm fusible interfacing
- 2x no-sew jeans buttons
- 6x 12.5mm plastic snaps
- 30cm x 3cm wide elastic
- Thread



CUTTING PLAN

- Seam allowance is 1cm unless otherwise noted.
- The shaded part of the illustrations indicates the wrong side of the fabric.
 - When cutting please try to be mindful of fabric wastage and place pattern pieces to leave as little scrap fabric as possible.



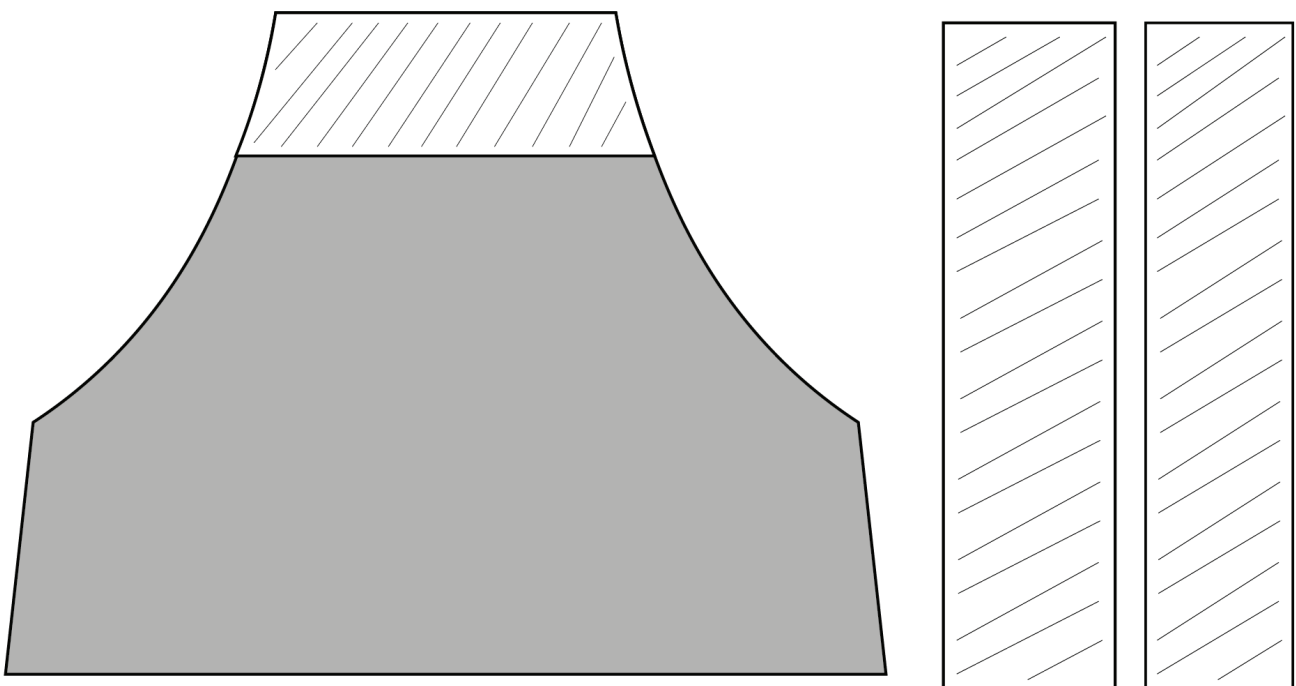
- 1 Front pocket** Cut 1
- 2 Back facing** Cut 1 on fold
- 3 Front facing** Cut 1 on fold
- 4 Back side seam placket** Cut 2
- 5 Front side seam placket** Cut 2

- 6 Front facing interfacing** Cut 1 on fold
- 7 Front strap** Cut 4
- 8 Back** Cut 1
- 9 Front** Cut 1

DUNGAREE PIECE

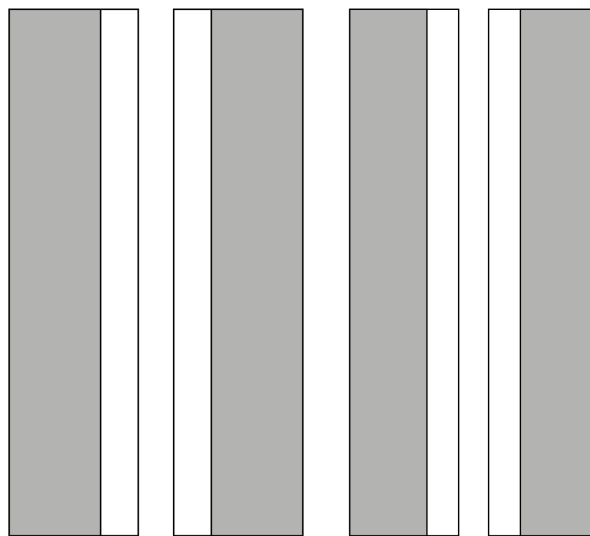
Using the cutting plan above as a guide, cut the dungaree pieces in your main fabric. Cut the front and back facings and the side seam plackets from your chosen lining fabric. Then cut interfacing for the top of the front facing and the side seam plackets.

1. Remember to transfer markings for the notches, pocket and fastenings onto your fabric. The markings for the fastenings need to be on the right side of your front piece and wrong side of the back piece.
2. Apply interfacing to the top edge of the front facing and side seam placket pieces. Interfacing will not be shown in the rest of the illustrations.
3. Finish all edges of the back and front pieces, bottom edge of the facings and top edge of the plackets before you start.

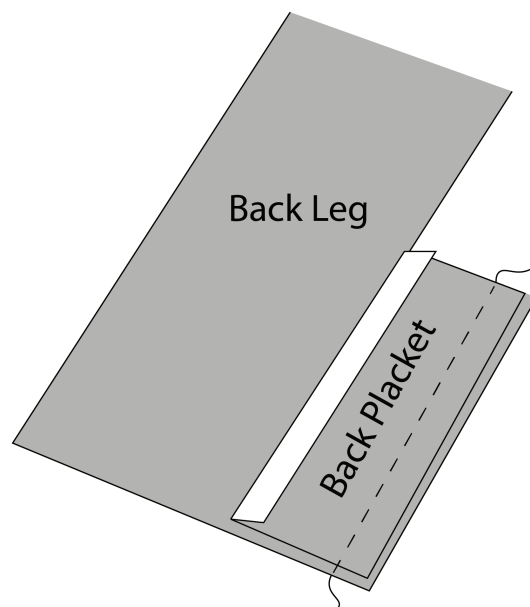


SIDE SEAM PLACKETS

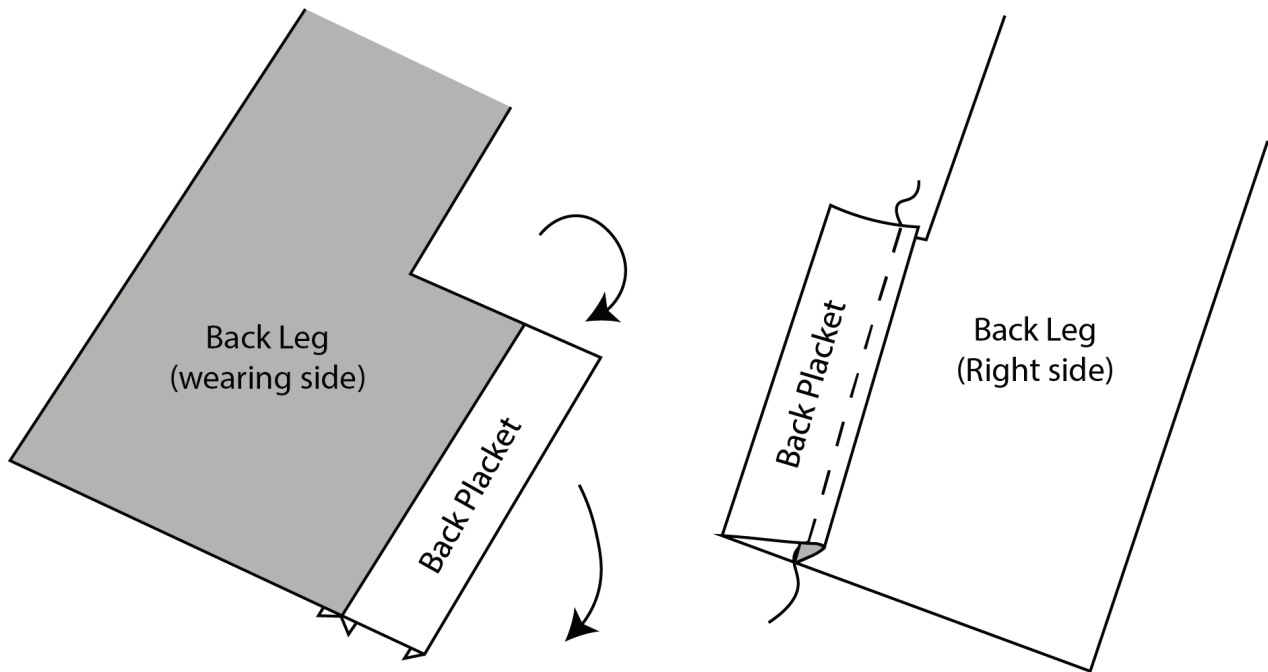
4. Take your front and back placket pieces and press one long edge of to the wrong side by 1cm. The back placket pieces are narrower than the front – don't get them mixed up!



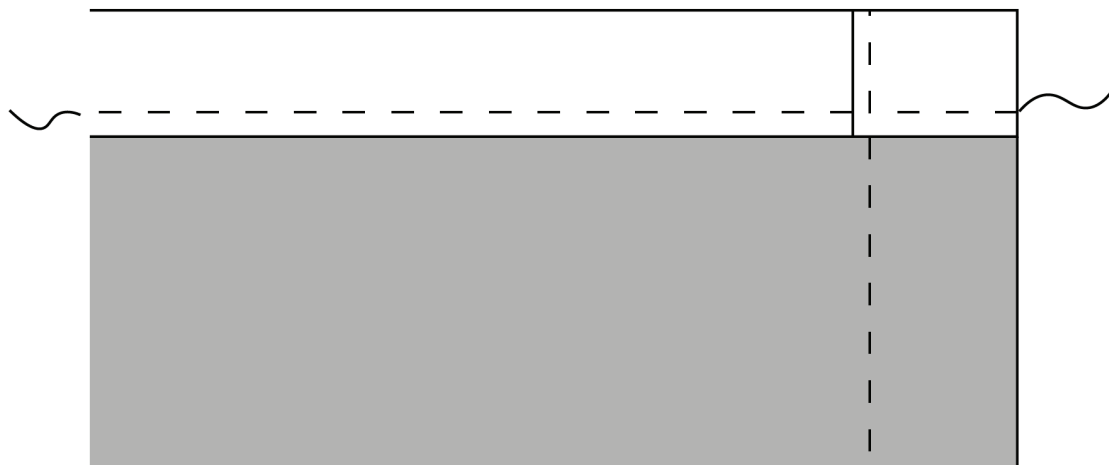
5. Place one of the back leg pieces right side down. Position one of the back placket pieces right side down on top of the extension at the bottom of the leg, aligning raw edges. Pin and stitch along the long edge. Press the seam allowances towards the back leg.



6. Fold the whole placket around to the right side of the back piece and press. Pin the remaining edge in place and topstitch close to the pressed in raw edge.

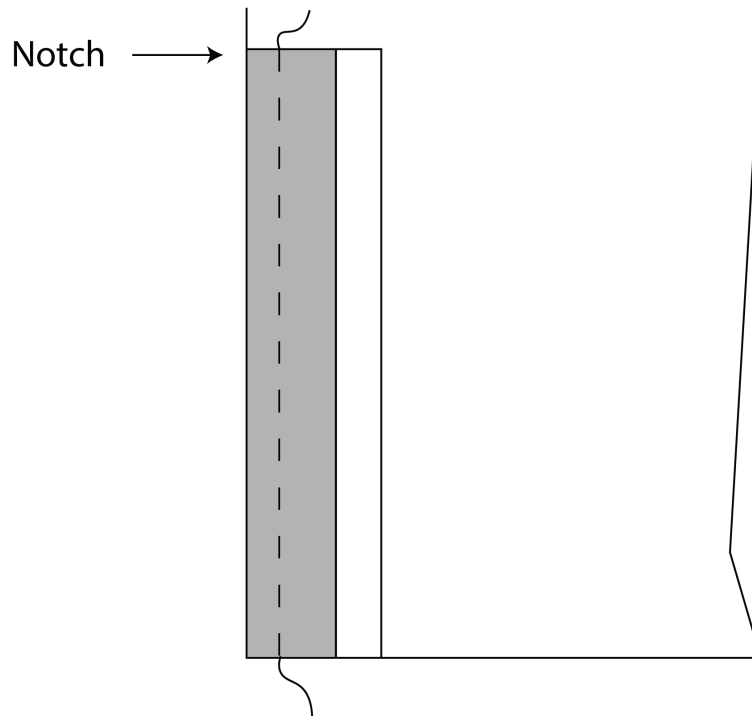


7. Press the hem of the back piece (including the placket) to the wrong side by 0.5cm and press. Turn again by 1.5cm. Press and topstitch in place.

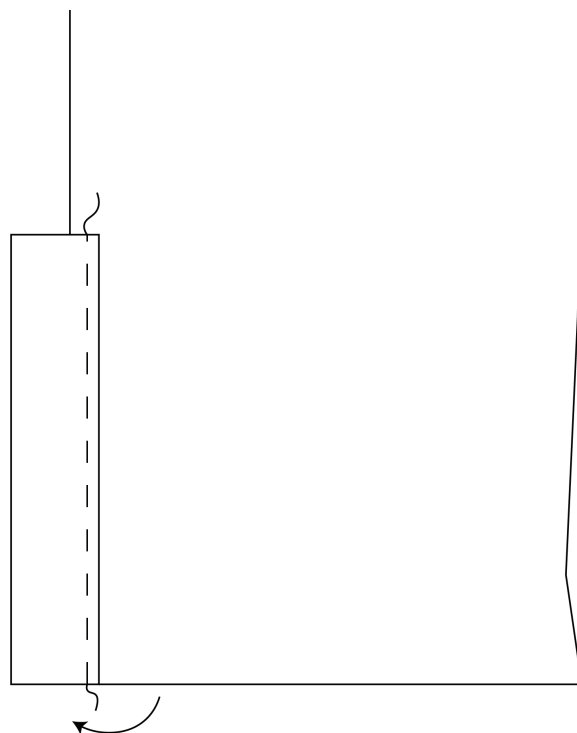


8. Repeat steps 5-7 for the second back placket

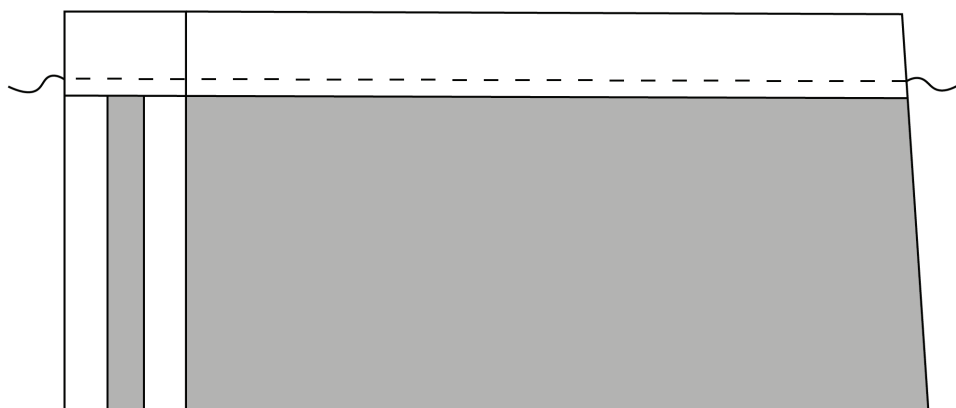
- 9. Right sides together pin the front placket to the front leg as illustrated, aligning the top of the placket with the notch and matching the hems. Stitch with the regular 1 cm seam allowance.**



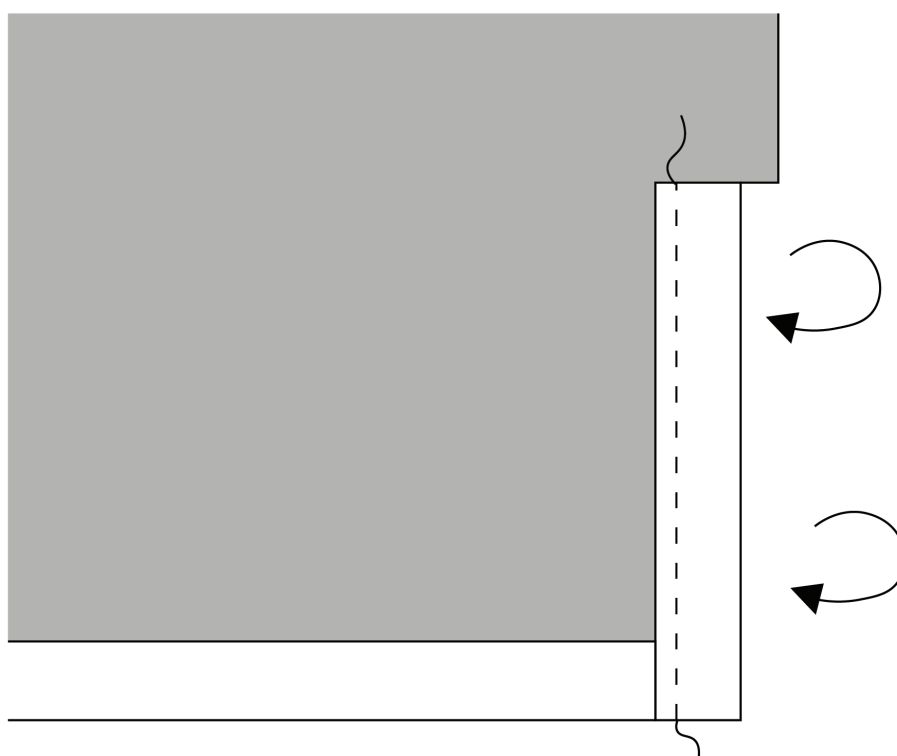
- 10. Press the seam allowances and placket away from the leg and understitch through the placket and seam allowances.**



- 11. Press the hem to the wrong side by 0.5cm.
Turn again by 1.5cm, press and topstitch**



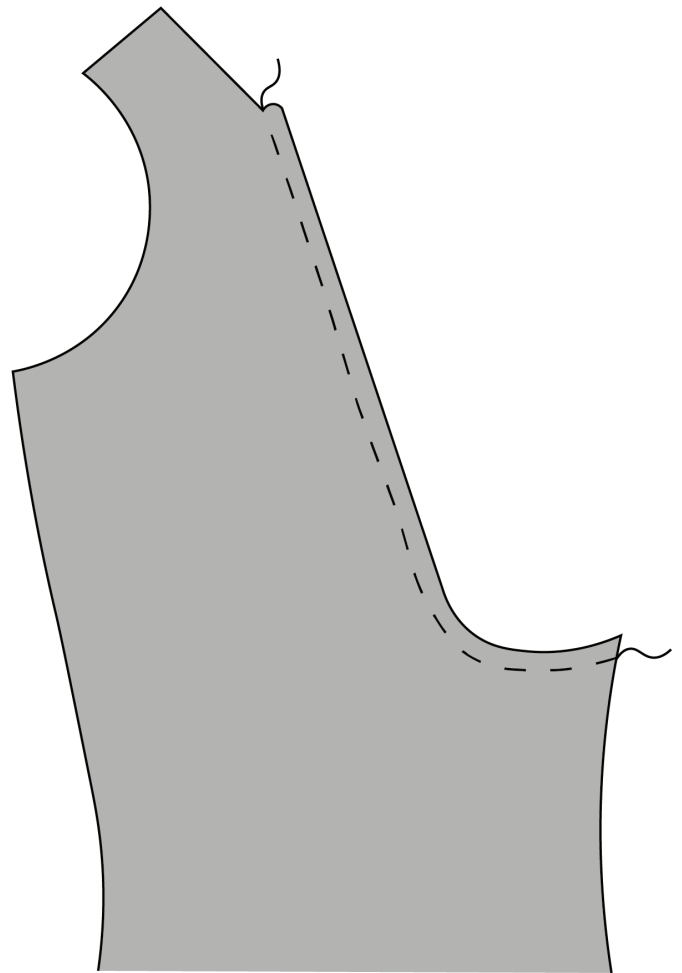
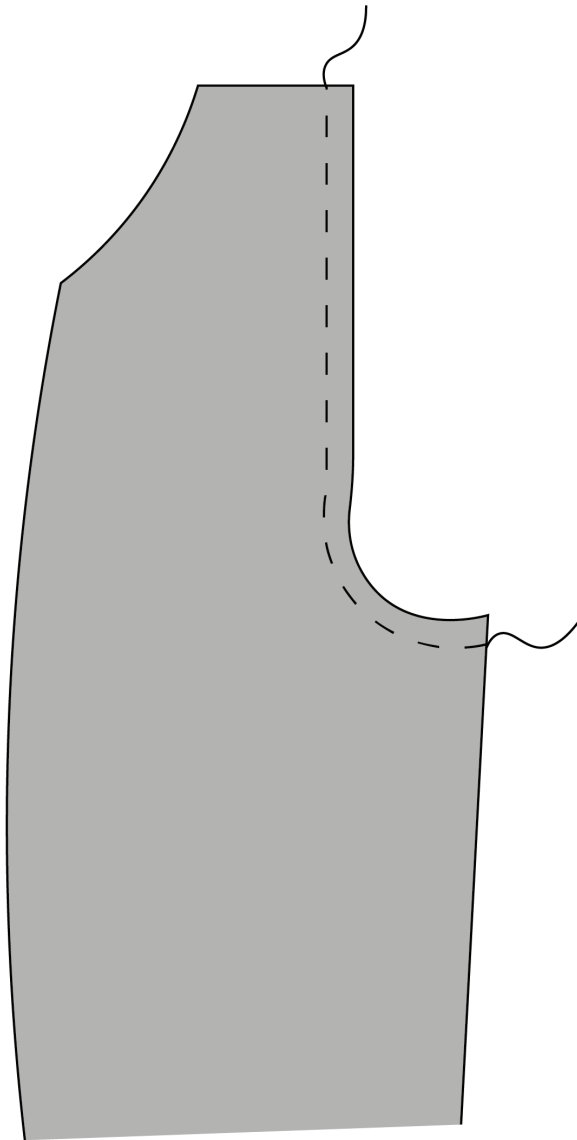
- 12. Snip into the notch at the top of the placket by 1cm, right up to but not past the edge of the placket. Fold the placket around to the wrong side of the front piece and press. Pin the remaining edge in place and topstitch close to the folded edge.**



- 13. Repeat steps 8-11 for the second front placket**

ASSEMBLING THE BACK AND FRONT

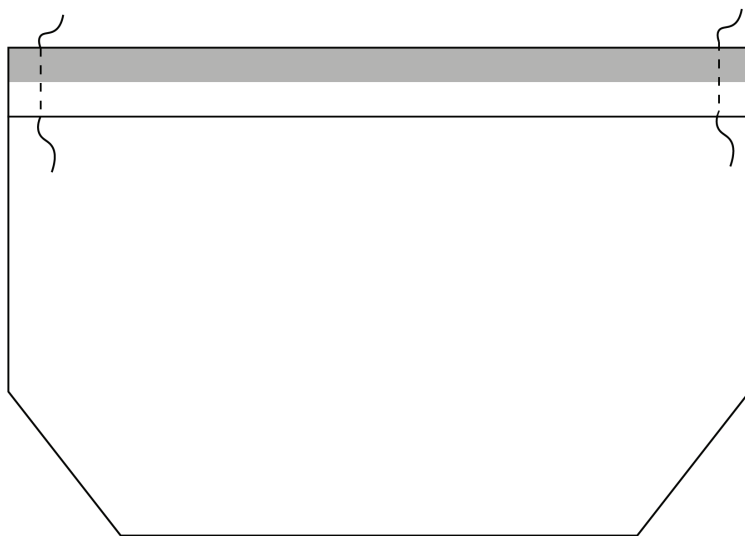
14. Right sides together, pin and stitch the centre front seam of the two front pieces. Press the seam allowances open.



15. Right sides together, pin and stitch the centre back seam of the two back pieces. Press the seam allowances open.

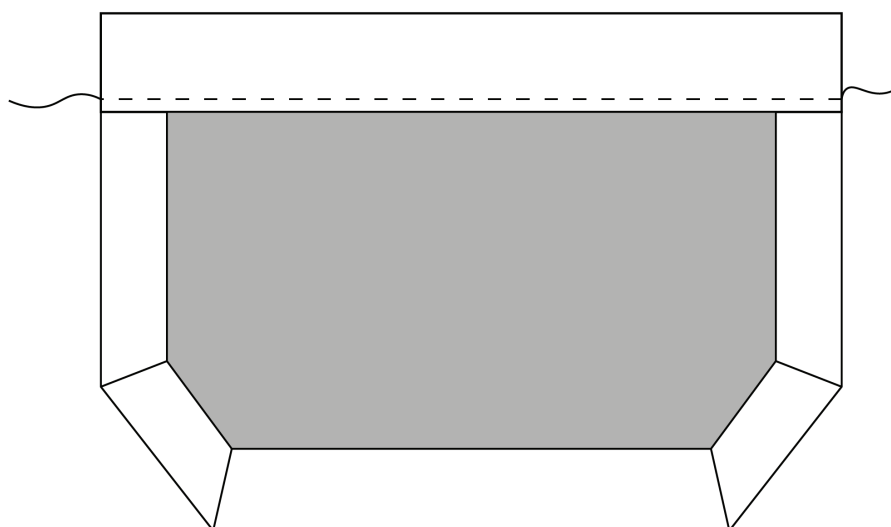
FRONT POCKET

16. Take your front pocket piece and fold the top edge to the wrong side by 0.5cm. Press. Then fold RIGHT sides together by 1cm. Stitch down each end as illustrated using a 1cm seam allowance, backstitching securely.

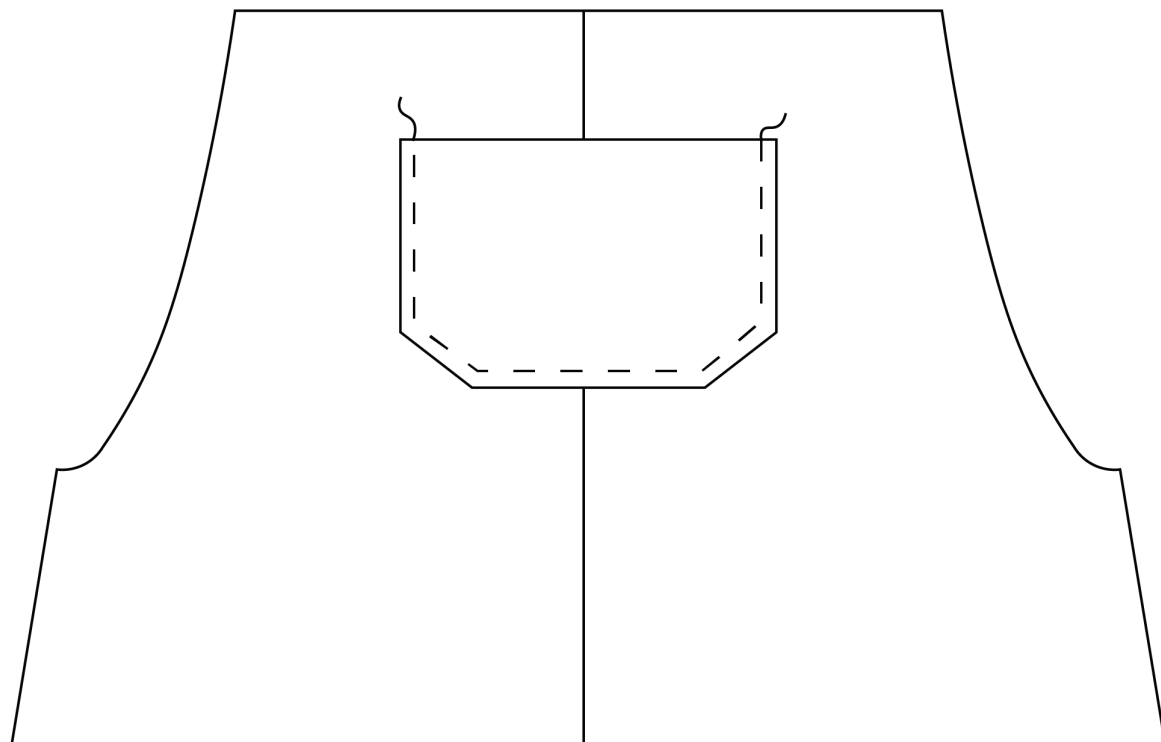


17. Clip the corners, then turn the top of the pocket right side out and press.

18. Topstitch 8mm from the folded edge.



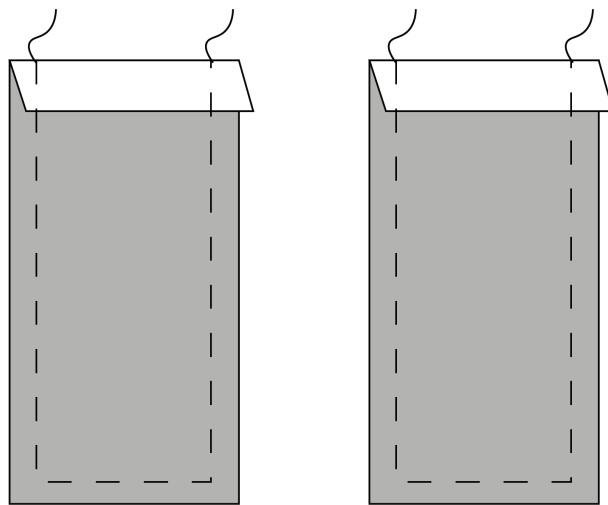
19. Place the front pocket onto the chest of the front piece, following the markings for the corners. Topstitch the side and bottom edges a few millimetres away from the edge to secure it in place.



STRAPS

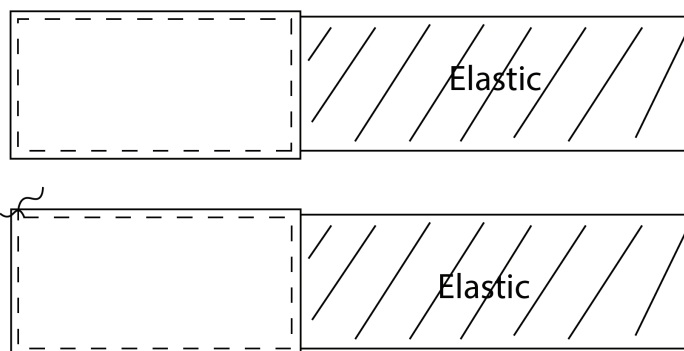
20. Cut two 12cm pieces of elastic.

21. Take your four front strap pieces and press one short end of each to the wrong side by 1cm. Place two front strap pieces right sides together. Stitch around the remaining three sides, leaving the pressed end open.

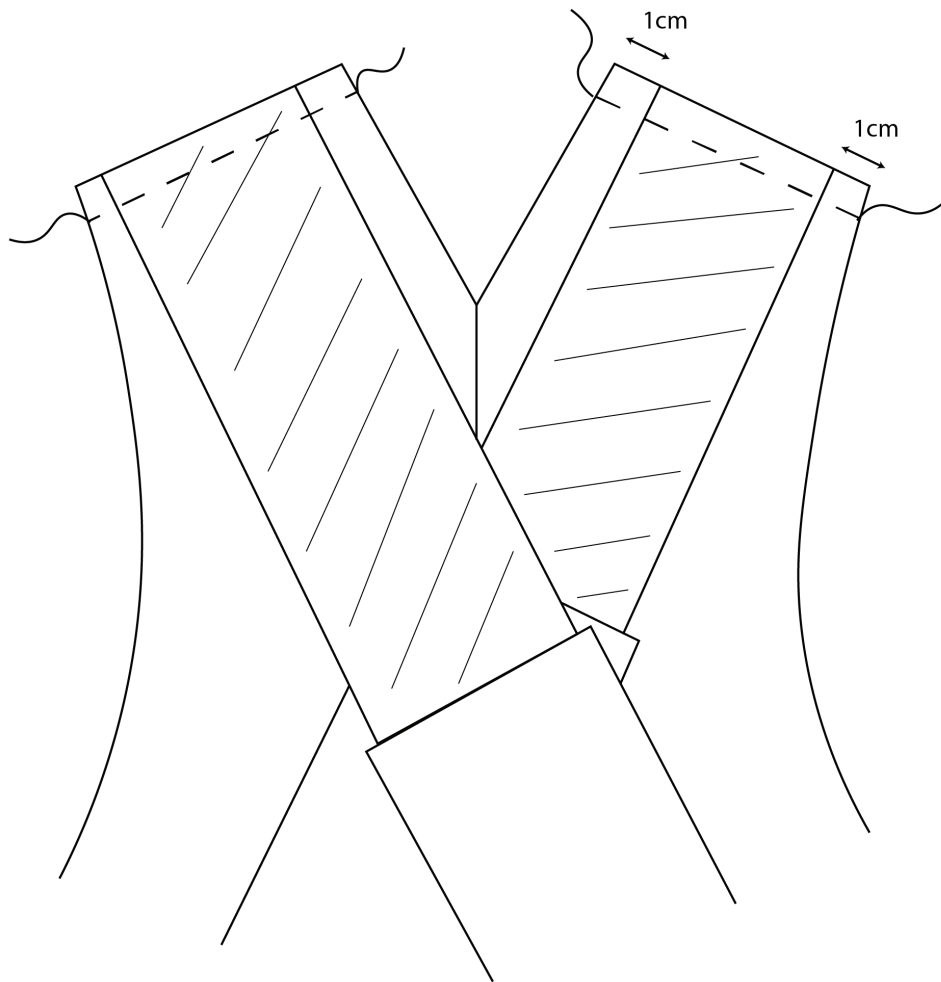


22. Clip the corners and trim down the seam allowances to about 5mm. Turn the straps through to the right side and press.

23. Insert a piece of elastic into the open end of each strap, so that 1cm of elastic is inside the strap. Topstitch around all four sides of the straps a few millimetres from the edge.

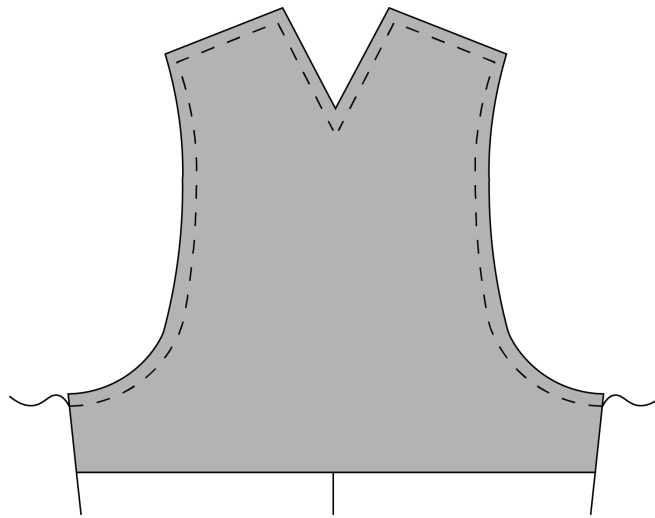


24. Right sides together, position the elastic ends of both straps on the top edge of the back piece as illustrated. Baste in place.



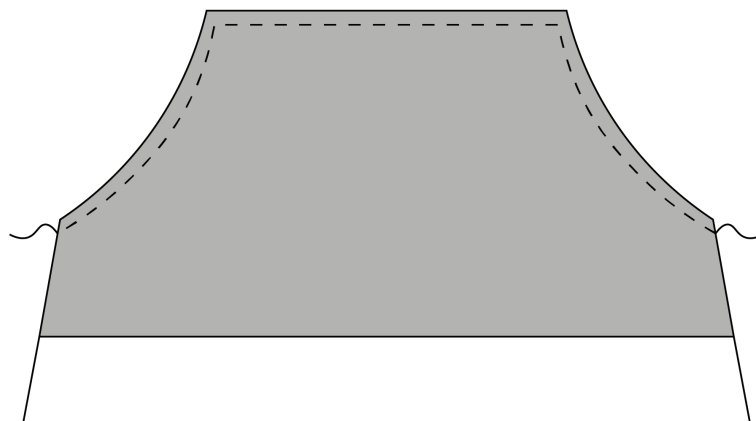
FACINGS

25. Lay the back facing on top of the back piece, right sides together. Pin and stitch around the top edges as shown, careful not to catch the straps in your stitching. *Do not* sew the side seams!



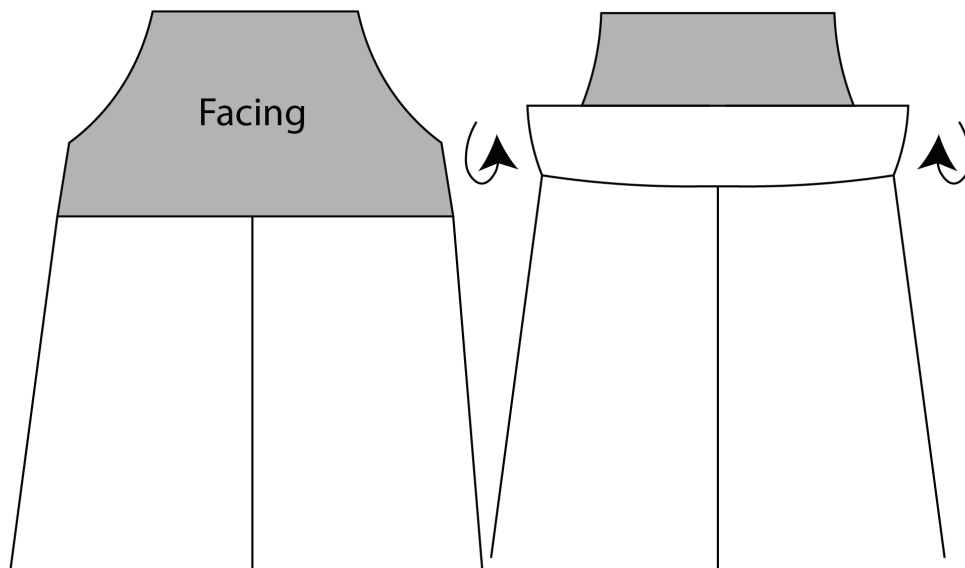
26. Clip the corners and snip into the seam allowances. Turn through to the right side and carefully press the edges.

27. Lay the front facing on top of the front of the dungarees, right sides together. Pin and stitch the three sides as shown. *Do not* sew the side seams! Clip the corners and snip into the seam allowances. Don't turn right side out just yet.

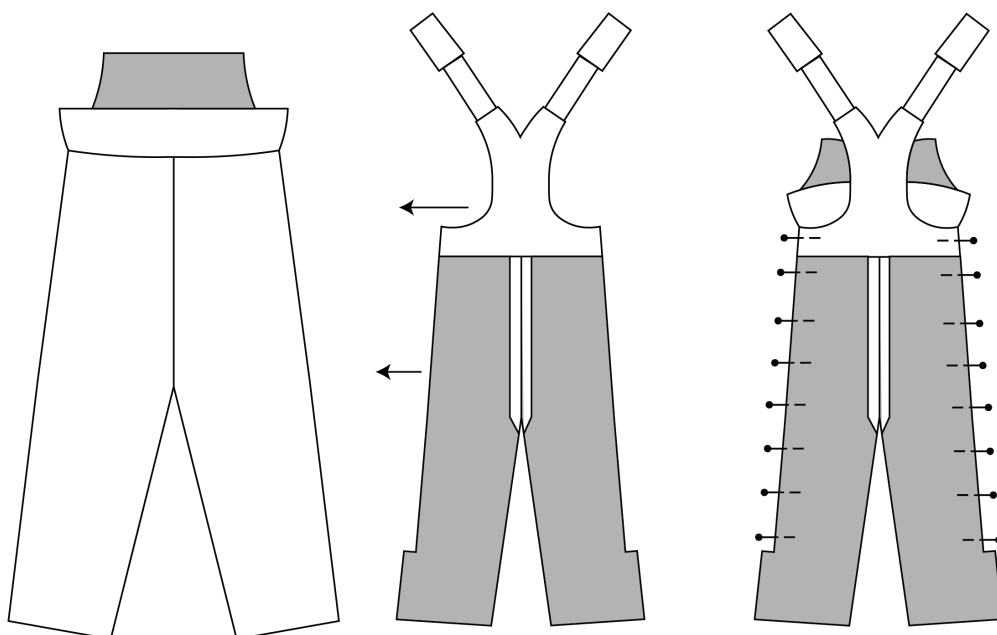


SIDE SEAMS

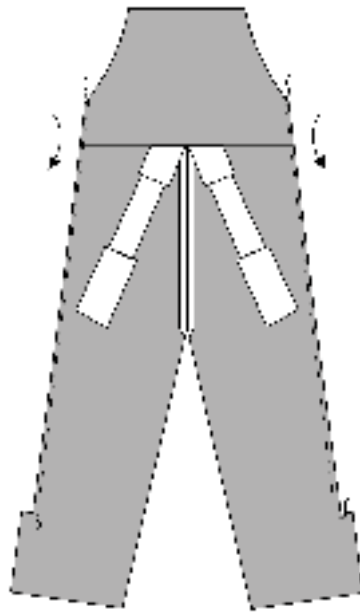
28. Lay the front of the dungarees on the table with the wrong side of the facing towards you. Lift the bottom of the facing to expose the side seams as shown.



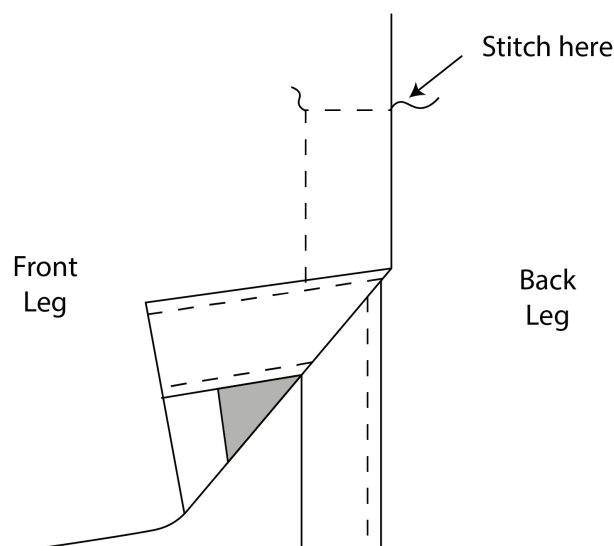
29. Lay the back of your dungarees on top with the right side facing down. Line up the side seams and pin in place.



30. Fold the bottom of the front facing back down so the back is sandwiched between the front and front facing at the side seams. Pin the side seams and stitch from the underarm, down to 1cm past the point where the side seam plackets start. Press the seam allowances to the front and turn the dungarees right sides out.

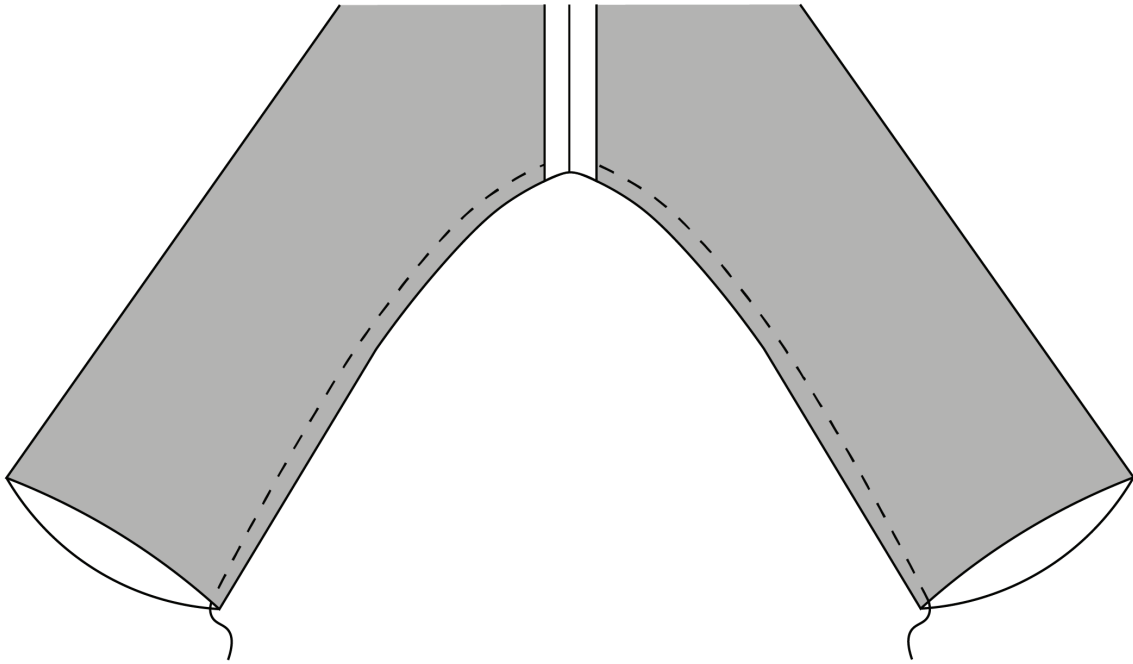


31. At the bottom of each leg align the back placket behind the front placket. The back placket should be 0.5cm narrower than the front placket at the side seam so it doesn't peek out. Pin in place and stitch across the top of the placket 1cm below the top edge, from the side seam to your previous stitching line. Repeat for the other leg.



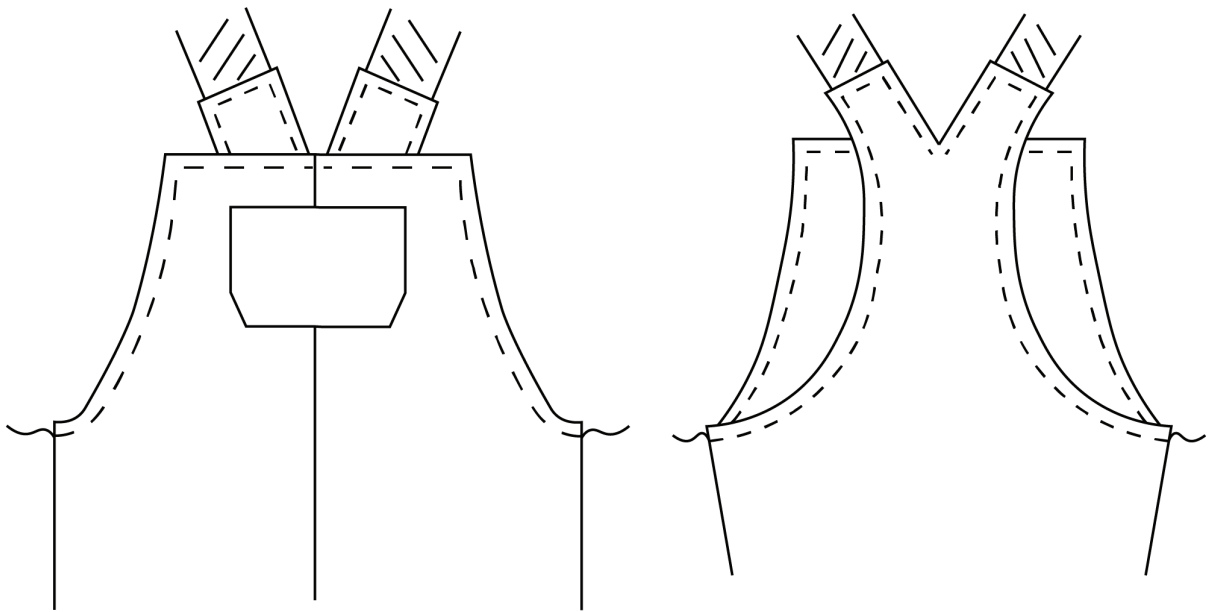
INSIDE LEG

32. Turn the dungarees inside out and align the inside leg seams. Pin and stitch. Press the seam allowances towards the back.

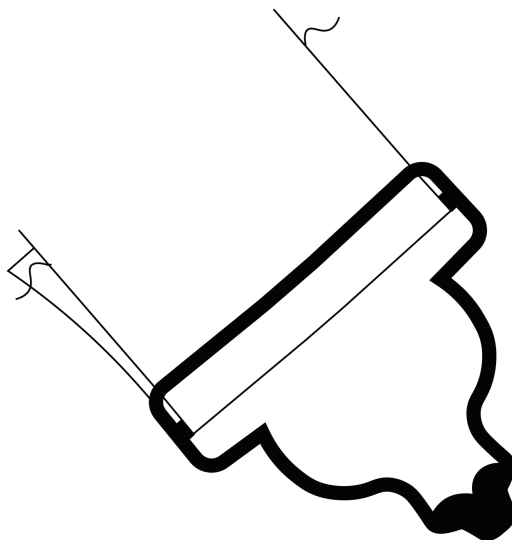


FINISHING

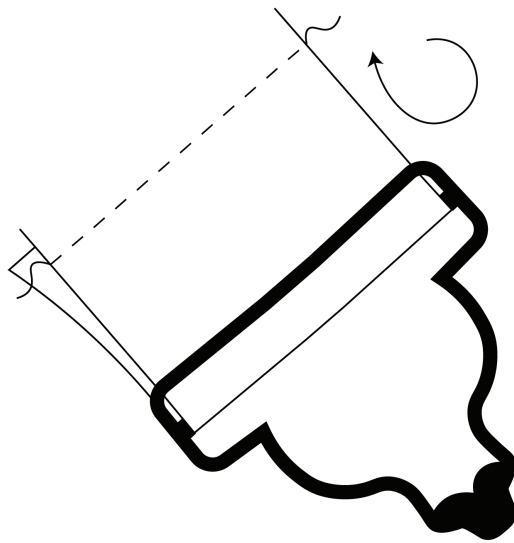
- 33. Turn the front facing right side out and press. Topstitch a few millimetres away from the edge all the way around the top of the garment.**



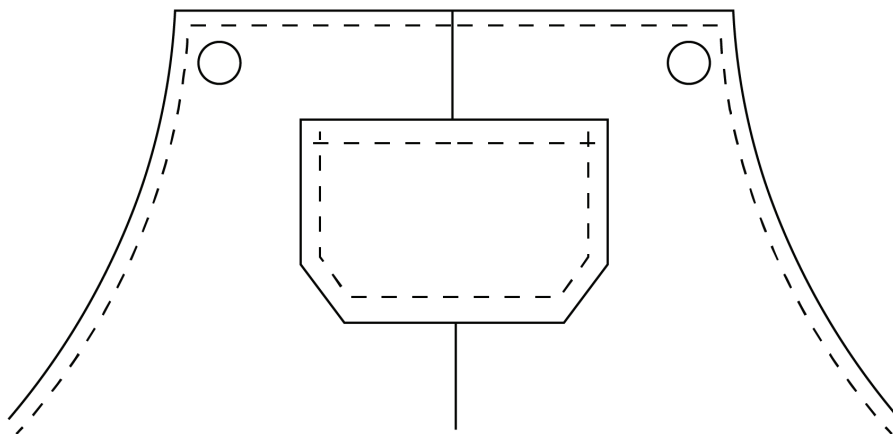
- 34. Slide the ends of the straps through the dungaree clips as shown. Try the dungarees on and adjust the position of the clip so the strap is the right length.**



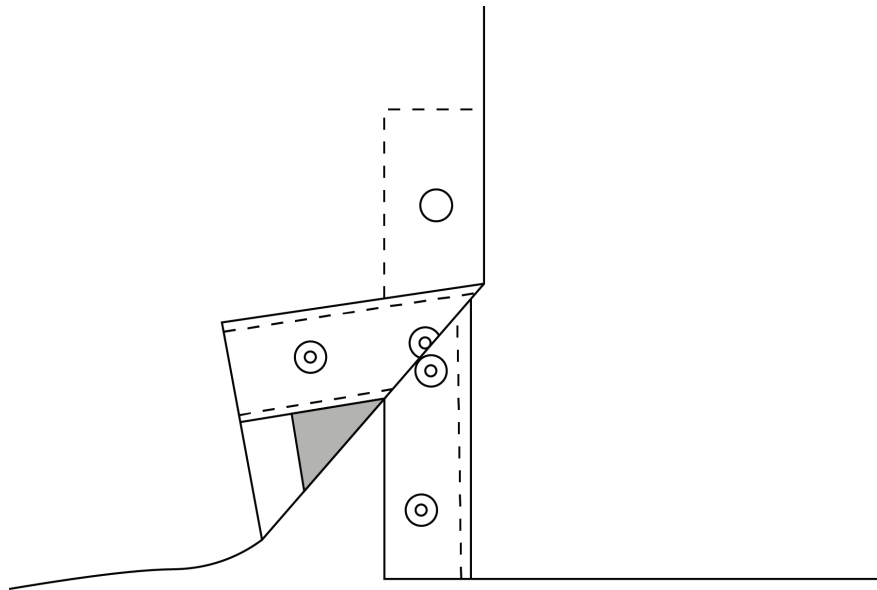
35. Fold the end of the strap back to the wrong side and tuck the raw end of the strap under and topstitch across the strap to secure. Repeat for the second strap.



36. Using the hand press or pliers to apply a jeans button on each of the two markings on the front bib.



37. Use the hand press or pliers again to apply plastic snaps on the markings on the side seam plackets. The male side of the popper should be on the front placket and the female on the back.



38. Finally, give the dungarees a final press so that they are ready to wear.