

# ADAPTIVE DUNGAREES



- 1m fabric
- 40cm cotton lining
- 2x 3cm dungaree clips
- 45cm fusible interfacing
- 2x no-sew jeans buttons
- 6x 12.5mm plastic snaps
- 30cm x 3cm wide elastic
- Thread



# PRINTING

- In your print menu, under size options, please select **ACTUAL SIZE**, instead of **FIT TO PAGE**.
- Print on **A4**, single sided sheets.

# INSTRUCTIONS

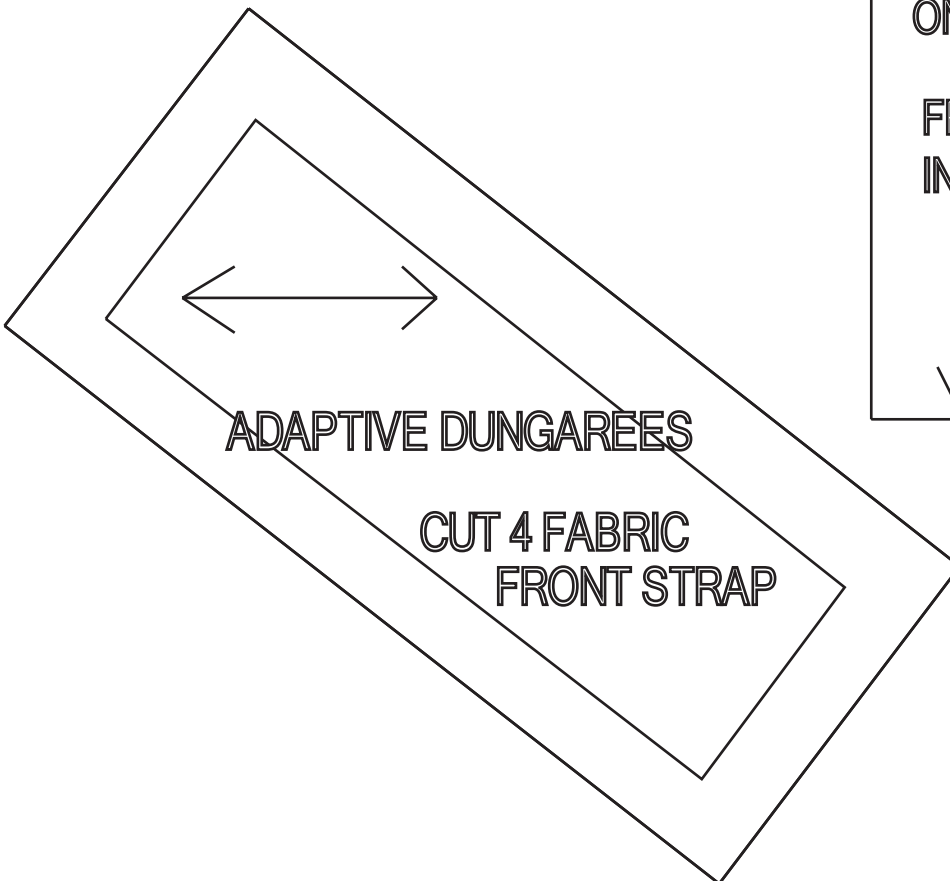
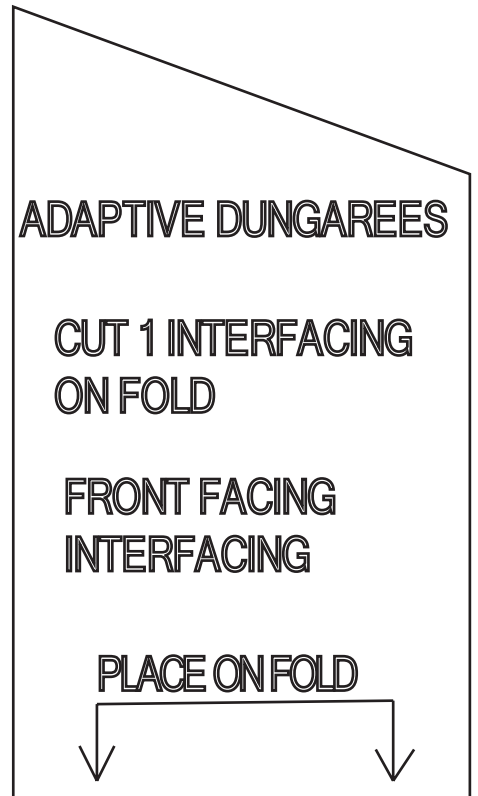
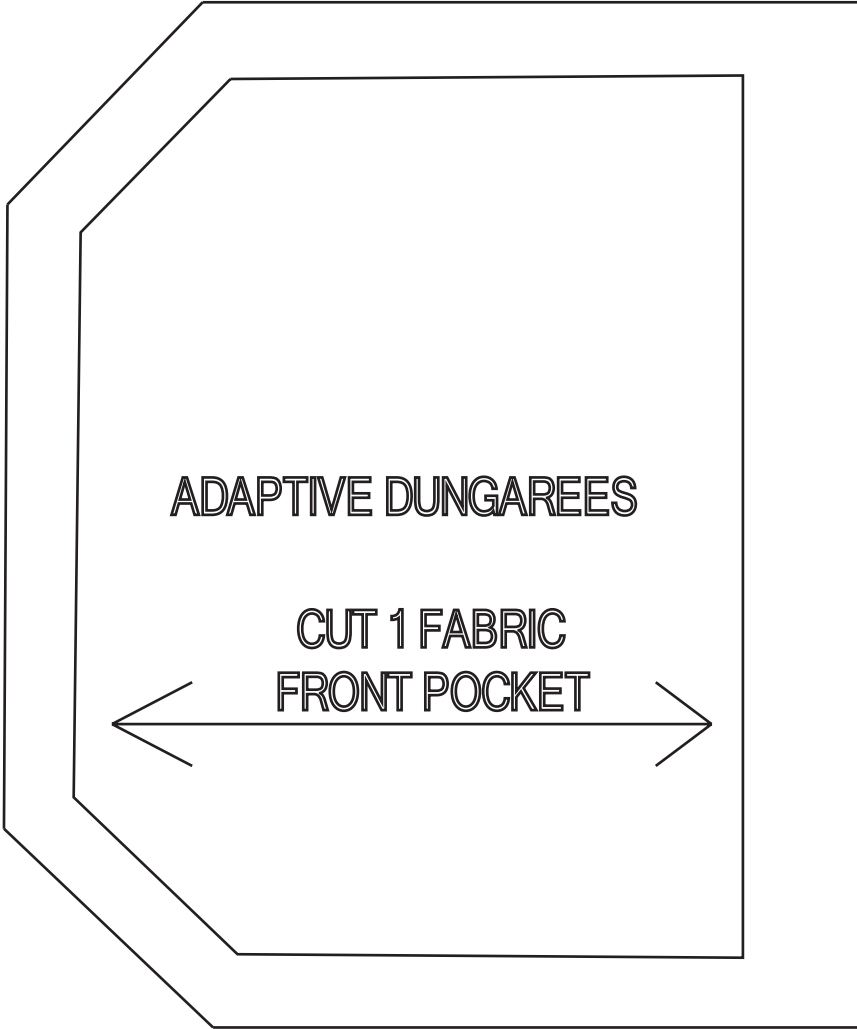
- Print and measure your test square to ensure your measurements are correct.
- Cut around each piece, using the stitched border as the edge.
- Lay out all the pieces and match each one to its letter using the lay plan as your guide.

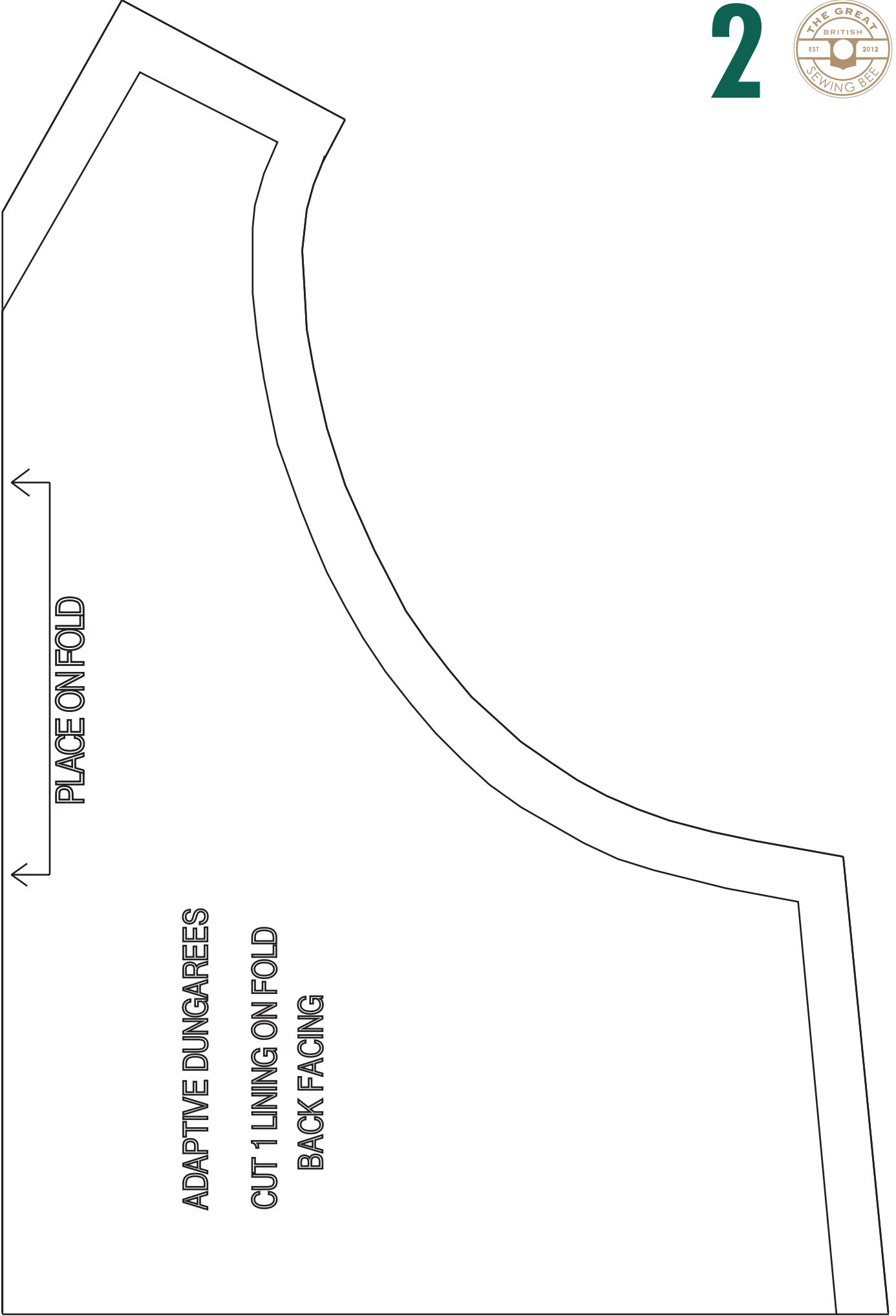
**Pages 1-4 are separate pieces, so there's no need to stick them together.**

**TEST SQUARE**  
5cm X 5cm



1

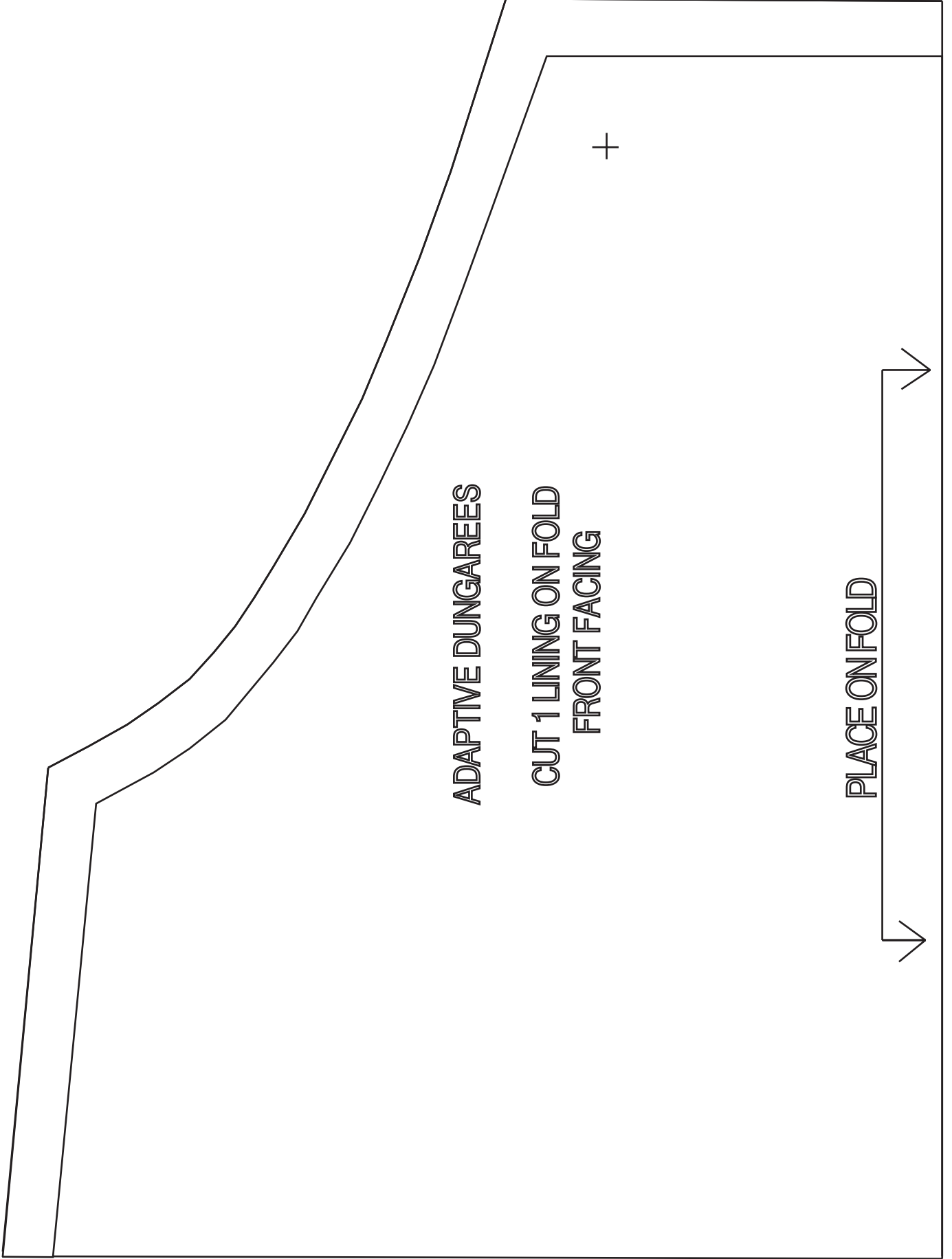


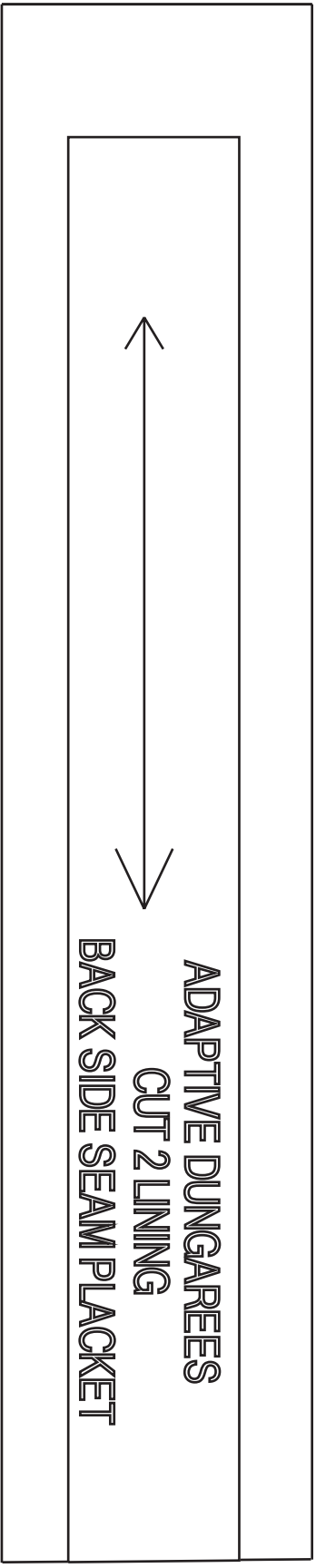
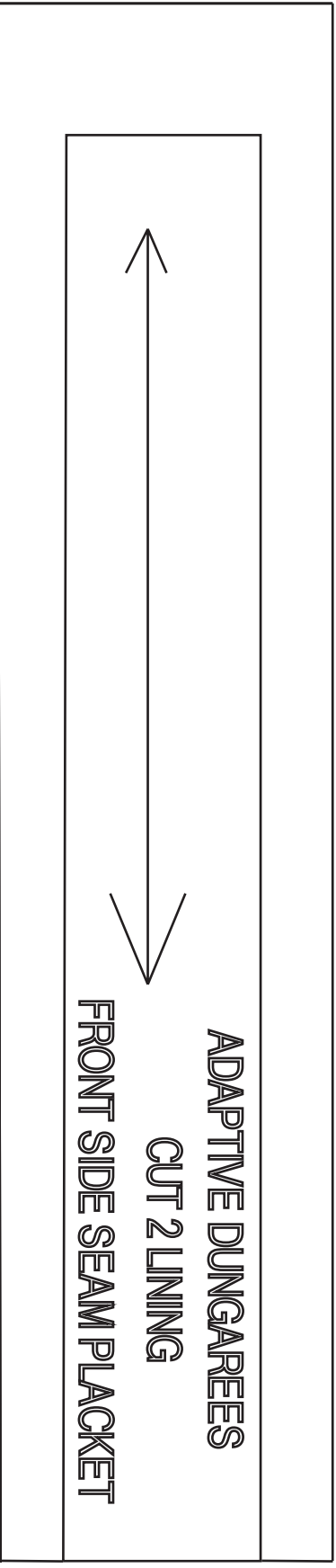


PLACE ON FOLD

ADAPTIVE DUNGAREES

CUT 1 LINING ON FOLD  
BACK FACING

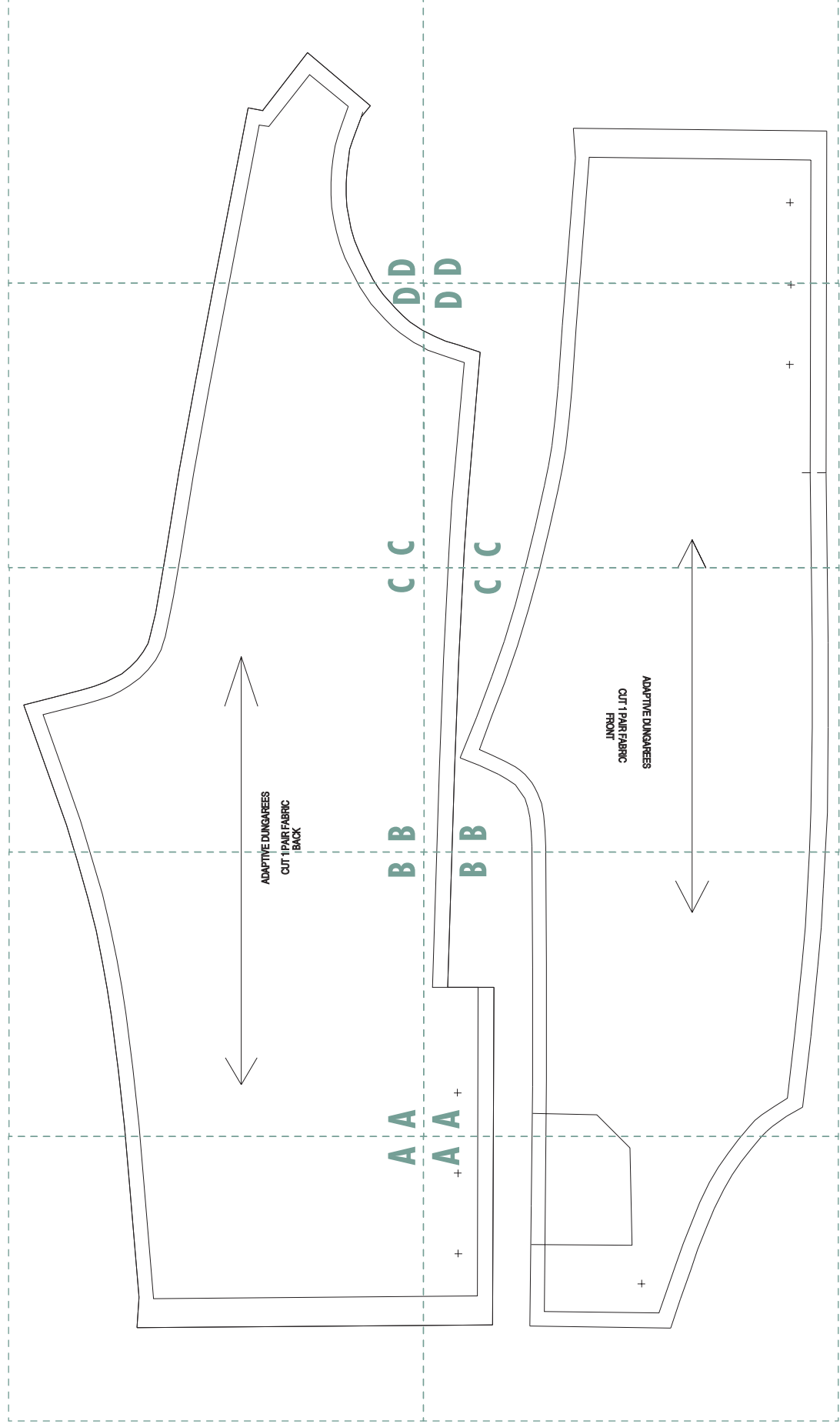




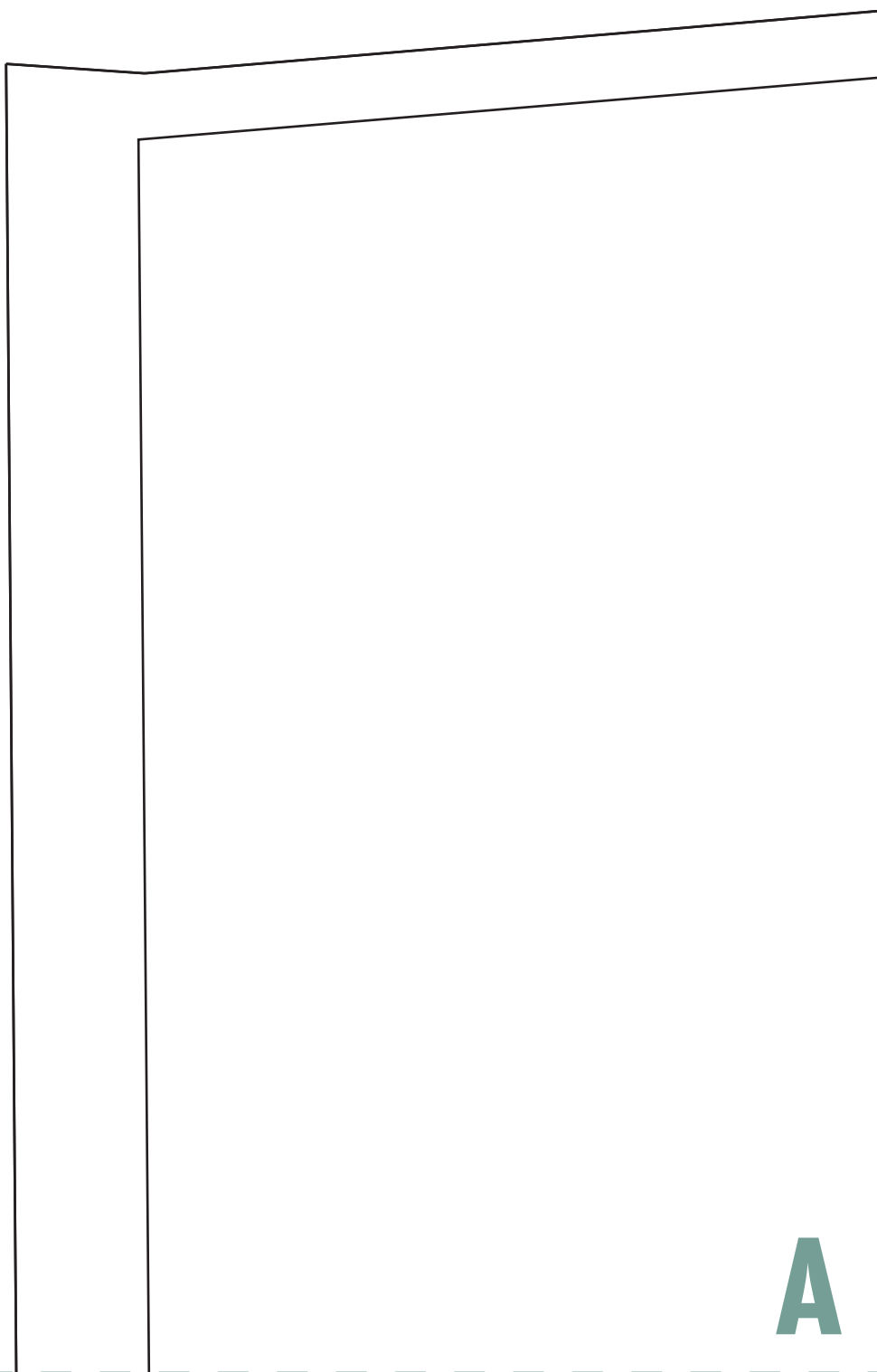


# PATTERN LAYOUT

- Cut along dotted border
- Align pattern pieces using letters as a guide  
(See below for reference)

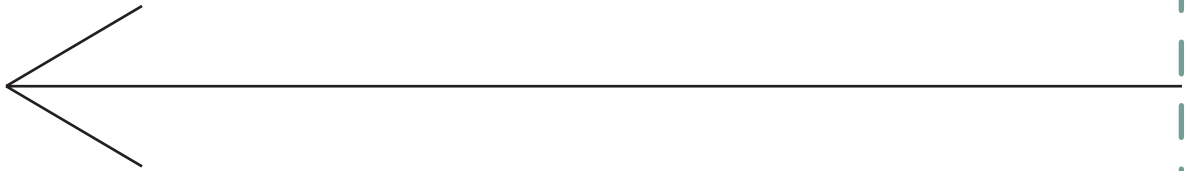
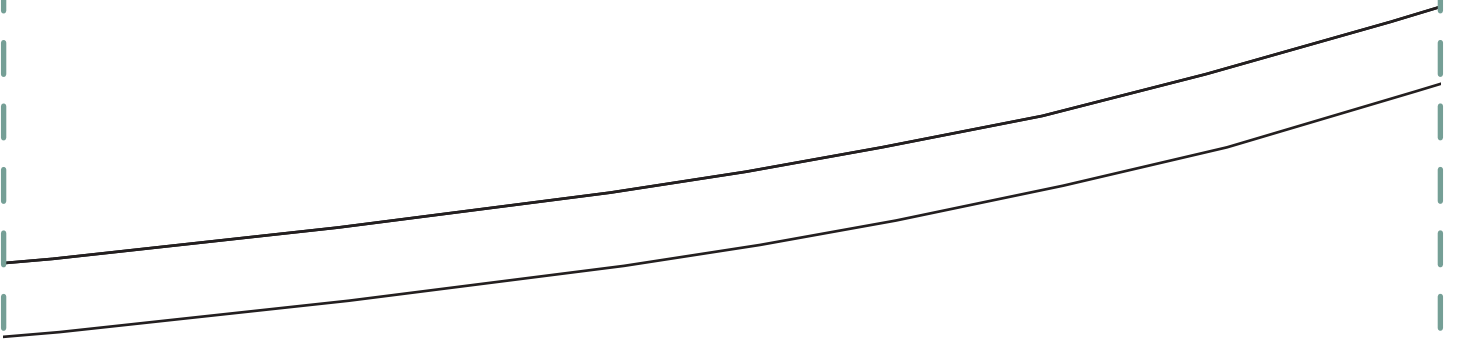


5



A

6



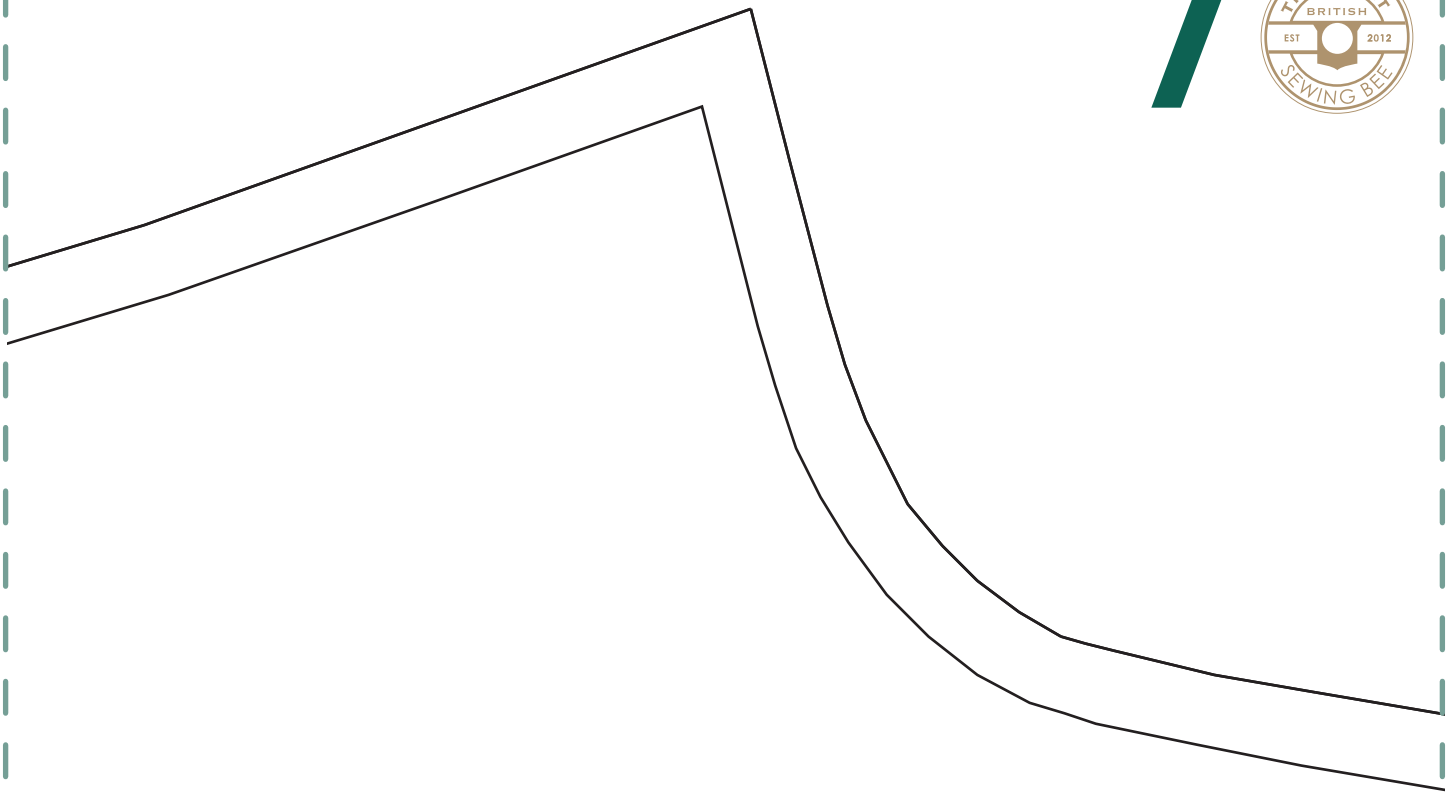
ADAPTIVE

CUT 1

A

B

7



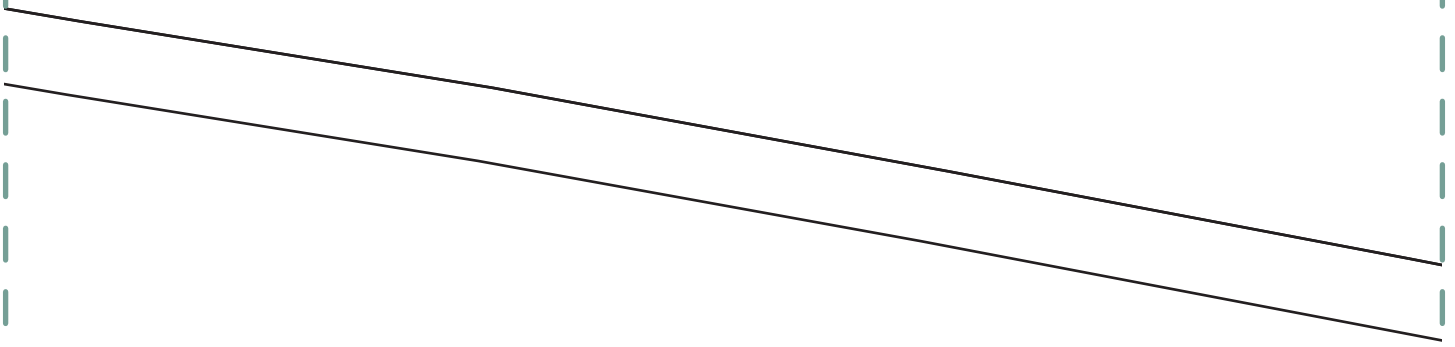
1/2 DUNGAREES

PAIR FABRIC  
BACK

B

C

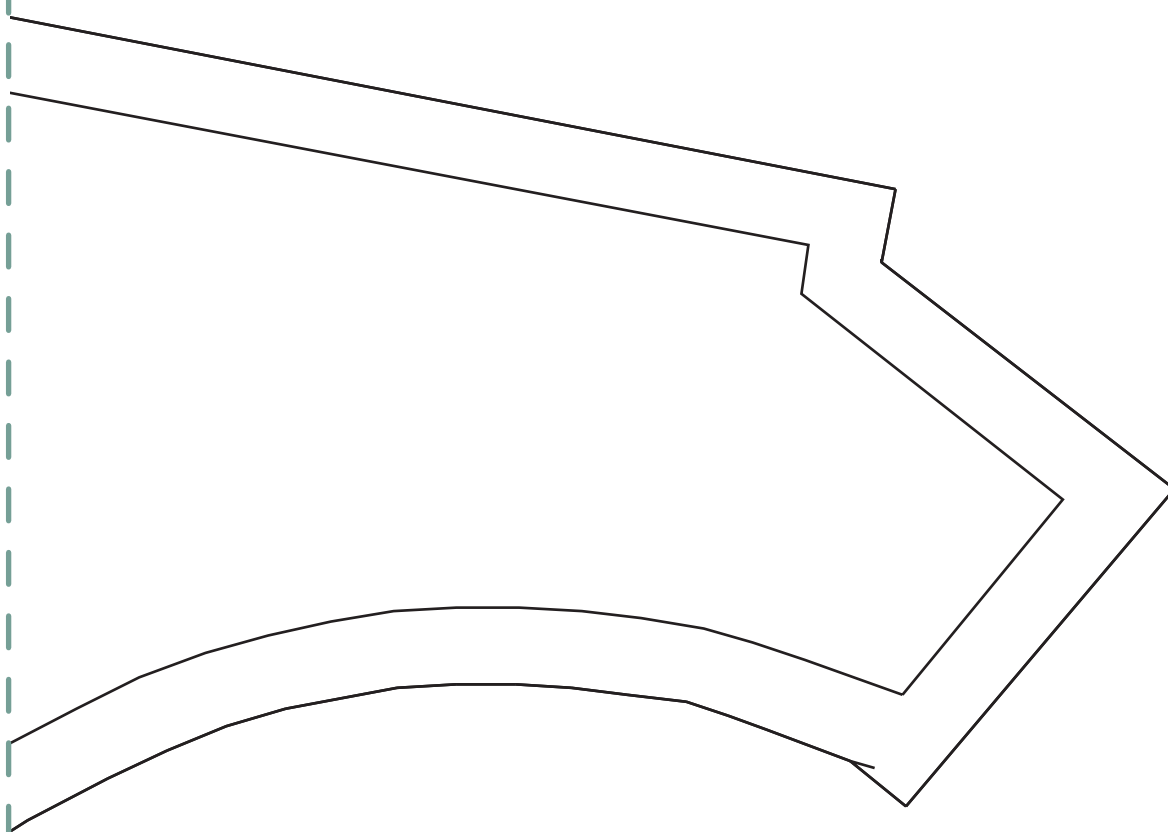
8



C

D

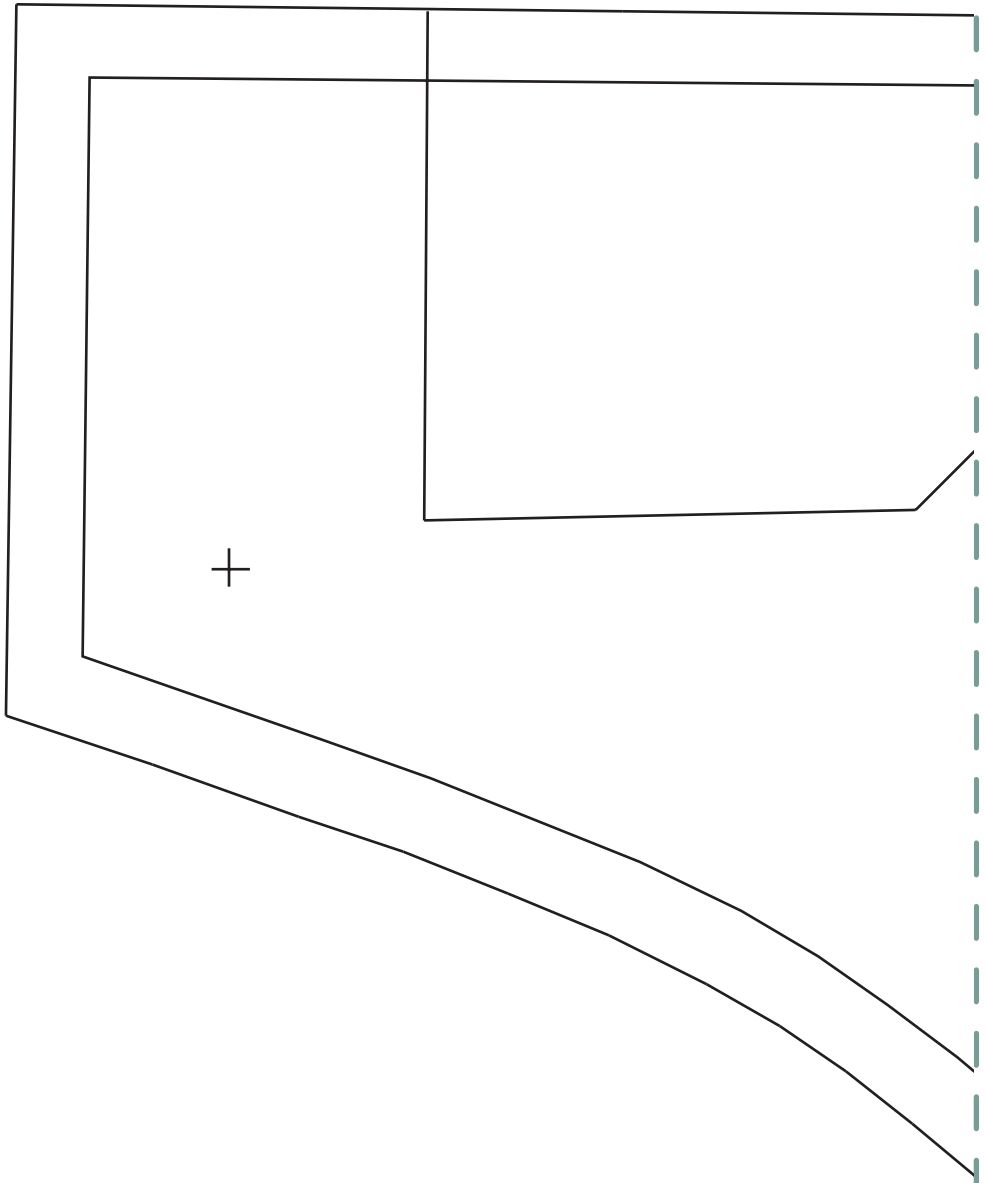
9



D



# 10

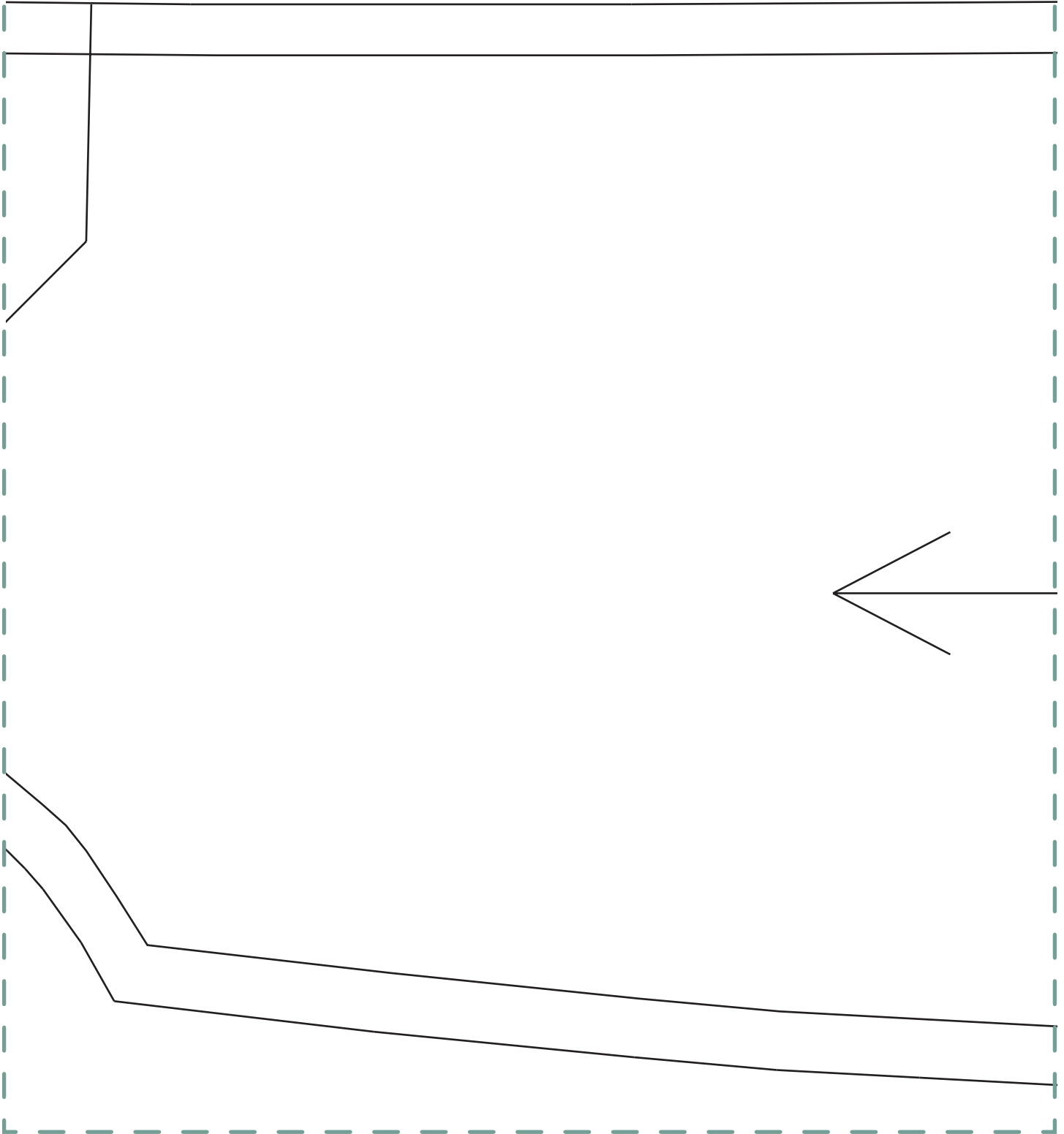


A

+

B

11



B



12

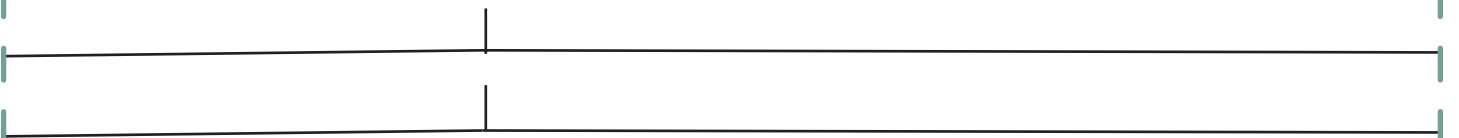
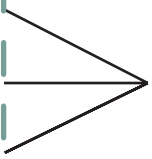
C

ADAPTIVE DUNGAREES  
CUT 1 PAIR FABRIC  
FRONT

D

C

13



D

14

